

CERTIFIED LAND CORNER RECORDATION

DESCRIPTION OF CORNER EVIDENCE FOUND, AND ORIGINAL RECORD (If known)

LOCATION

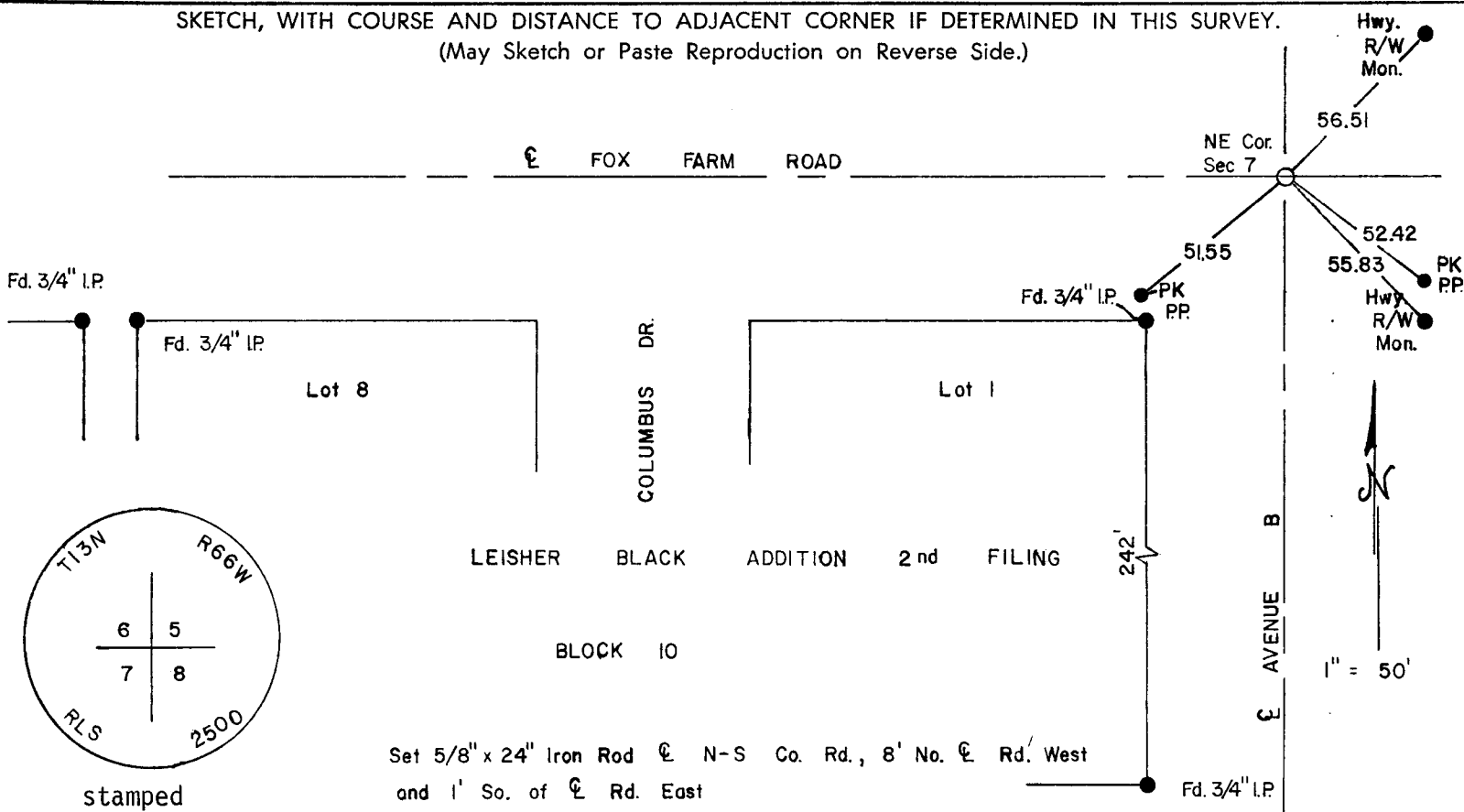
S.6 S.5
S.7 S.8
T.13 N.,
R:66W., 6th P.M.

Corner position re-established from monumentation found in Leisher Black Add. 2nd Filing.

DESCRIPTION OF MONUMENT AND ACCESSORIES ESTABLISHED TO PERPETUATE THE ORIGINAL LOCATION OF THIS CORNER:

At the Corner: Set 5/8" dia. x 24" long reber with Surv KAP at $\text{\textcircled{C}}$ N.S Rd, 1' so. of $\text{\textcircled{C}}$ Rd. East and 8' No of $\text{\textcircled{C}}$ Rd. west.

SKETCH, WITH COURSE AND DISTANCE TO ADJACENT CORNER IF DETERMINED IN THIS SURVEY.
(May Sketch or Paste Reproduction on Reverse Side.)



Set 5/8" x 24" Iron Rod $\text{\textcircled{C}}$ N-S Co. Rd., 8' No. $\text{\textcircled{C}}$ Rd. West and 1' So. of $\text{\textcircled{C}}$ Rd. East

I, John A. Steil certify that I have carefully performed or reviewed the work done on the diagrammed corner as reported on this recordation form and approve the same.

John A. Steil
Signature of Surveyor

Wyo. L.S. No. 2500
Registration No.

STATE OF WYOMING,
Office of Clerk and Recorder,
County of _____

This "corner record" was filed for record on the 3 day of May, 1978, was noted on the cross-index plat and is assigned page No. _____, in book No. _____.

County Official

Cross Index No. _____	T. _____	R. _____	Mer. _____
_____	T. _____	R. _____	Mer. _____
_____	T. _____	R. _____	Mer. _____
_____	T. _____	R. _____	Mer. _____
_____	T. _____	R. _____	Mer. _____
_____	T. _____	R. _____	Mer. _____
_____	T. _____	R. _____	Mer. _____

481804

Printed on:

Printed on:

Printed on:

Printed on: